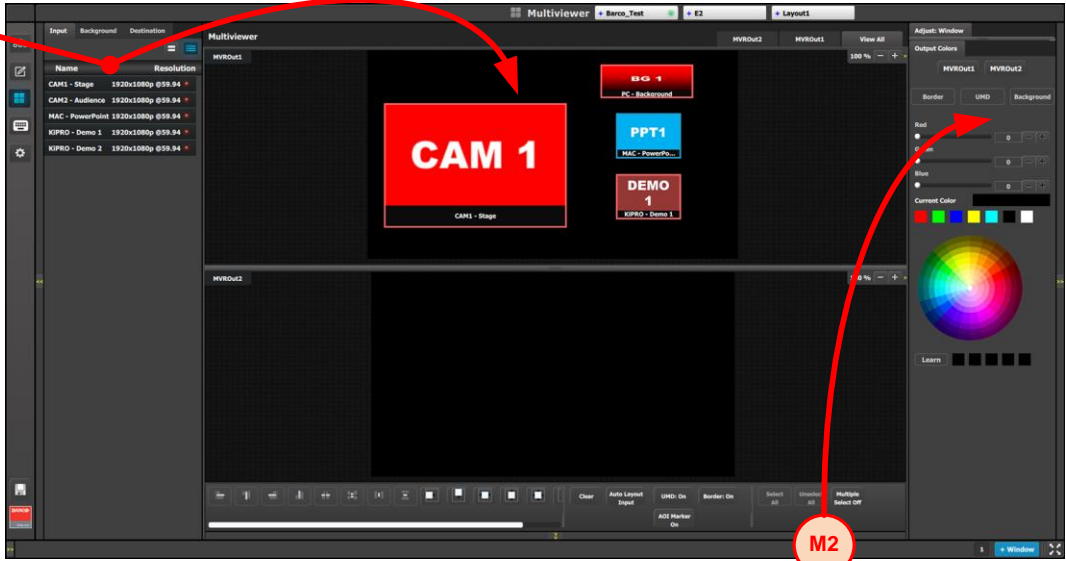


MULTIVIEWER (MVR) MENU

M1: Select MVR Sources - From the dropdown menus select the Inputs, Backgrounds, and Destinations you want to view and drop them into Multiviewer Outputs. Overlapping is not allowed. An MVR source may be used twice. A maximum total of 63 windows can be used for Inputs and 63 windows can be used for Outputs.

M2: Adjust Window - Adjust the size, position and the color parameters associated with each window. Repeat for all Inputs and save.

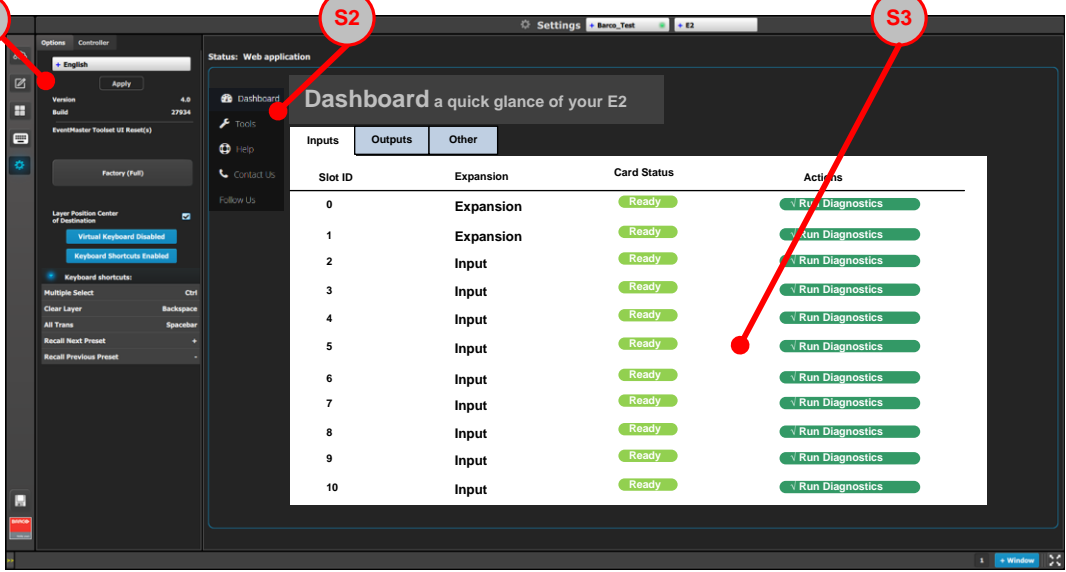


SETTINGS MENU

S1: Options - On the Options tab click on the boxes to select system wide user preferences such as Layer positioning.

S2: Tools - Allows users to perform Backup and Restore operations or download the latest software from the Barco website

S3: Dashboard - Provides status information regarding the cards and other system diagnostic information.



Linking

An Event Master unit can link with other Event Master units. Depending on the linking configuration, linked units share inputs, and they expand the number of layers and outputs. For more information on linking, see Section 6.17 "Configuration Menu > Linking in the Event Master Devices User's Guide, or see the instructional videos on the Barco Folsom IP YouTube site.

For links to other quick-start guides and the Event Master Devices User's Guide, see the Technical Downloads tab for each product on the Barco Presentation switchers page at: <https://www.barco.com/en/Products/Image-processing/Presentation-switchers>

For links to instructional videos, see the Barco Folsom IP YouTube site at: <https://www.youtube.com/user/BarcoFolsomIP>.

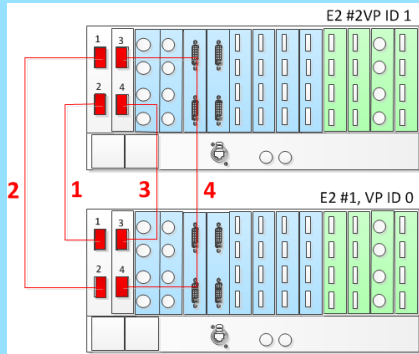
Link Connections

1. Check the cable orientation for keying. The cable fits in only one orientation.
2. Fully insert the cable into the connector on the Link Card.
3. If the cable resists full insertion, do not force it; pull the cable out, check its orientation, and reinsert it.
4. Make sure that the latch is properly engaged.
5. Always use the release when removing the cable.
2. Make sure that the E2s have different IP addresses. The default IP address for each unit is the same; one of them must be changed.
3. Connect all devices to network Ethernet.

Example: Linking a pair of E2s

Be sure that you properly align the Link cable connectors prior to insertion. Connectors should insert easily with almost no resistance, until the lock is about to engage. Be sure that the lock engages fully to ensure proper contact. Make sure that you use the locking mechanism and then push each cable until it locks in place.

1. Connect the Link cables provided with each E2 between the Link connectors as follows:
 - VP ID 0, Link Card slot 1, Link 1 >> VP ID 1, Link Card slot 1, Link 2
 - VP ID 0, Link Card slot 1, Link 2 >> VP ID 1, Link Card slot 1, Link 1
 - VP ID 0, Link Card slot 2, Link 1 >> VP ID 1, Link Card slot 2, Link 2
 - VP ID 0, Link Card slot 2, Link 2 >> VP ID 1, Link Card slot 2, Link 1

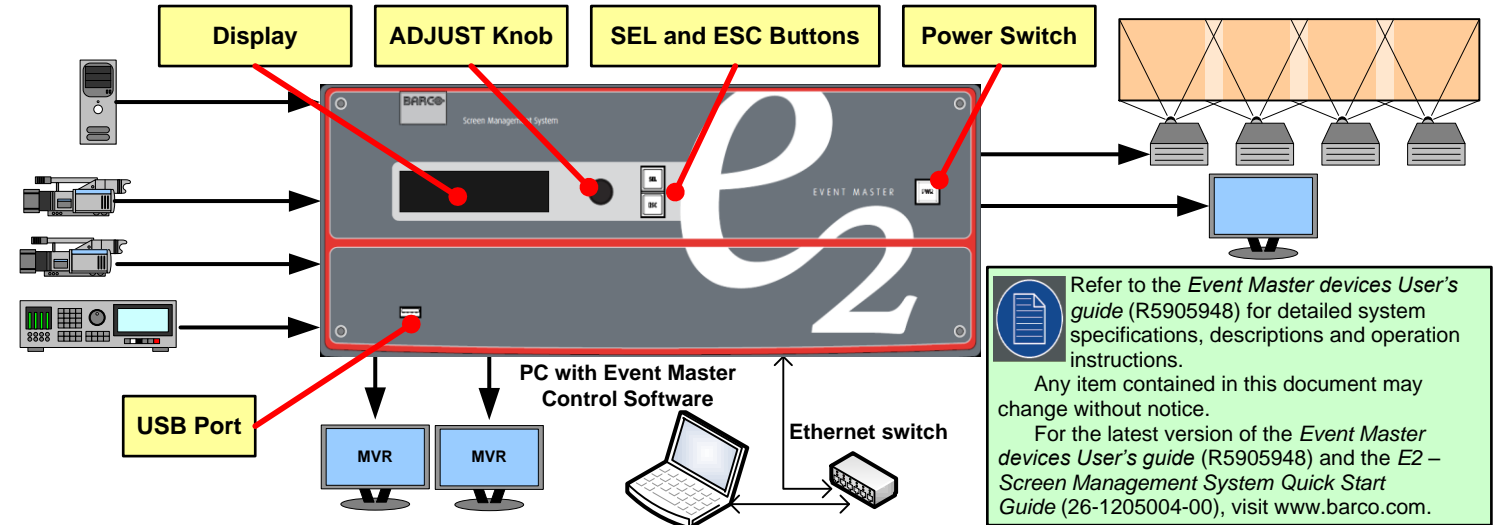


7. Drop the second E2 in the EM GUI.

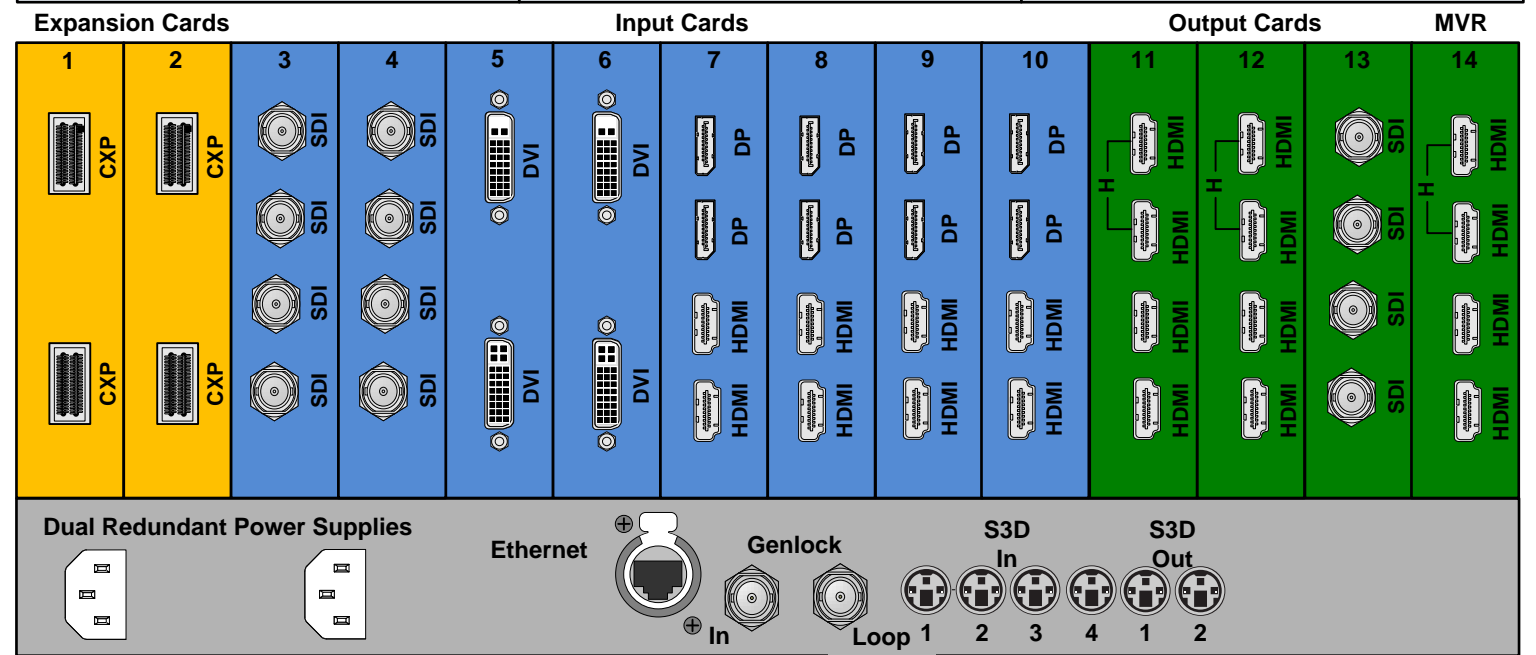
The EM GUI presents the options of adding the second unit as a new system, as a master, or as a slave.

BARCO Event Master E2 – Screen Management System Quick Start Guide

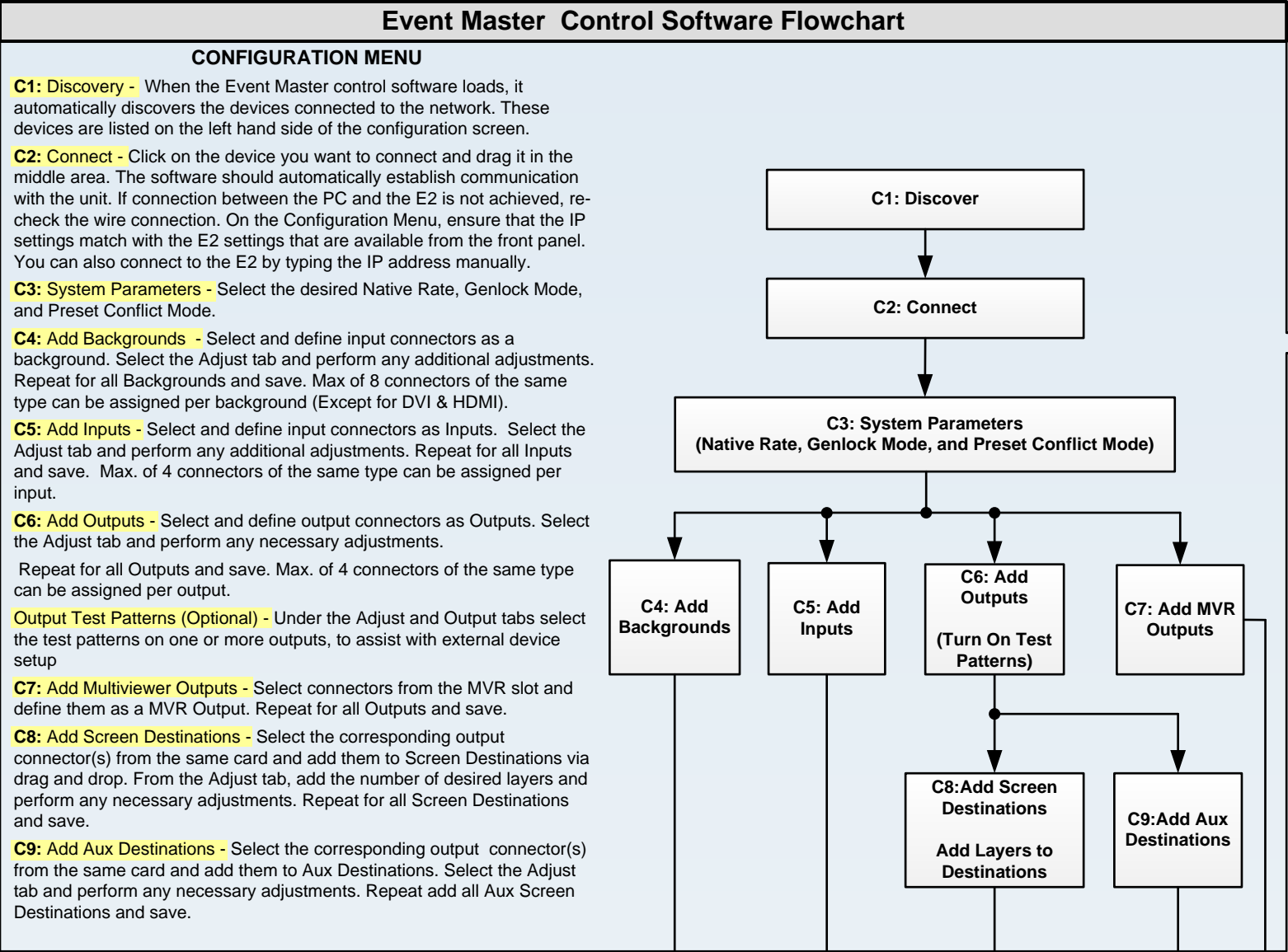
BARCO Technical Support:
USA: +1 (866) 374-7878
EMEA : 0800 90 0410
CHINA : 40088 22726
APAC: +603-78803362
www.barco.com/en/Support



- System Setup**
1. Ensure that the unit is physically secured in a rack or is placed on a flat surface with stable support. If the unit is installed in a rack, **it is mandatory that the rear brackets are also installed.**
 2. Connect all sources, displays, and peripherals to the E2 according to your event's requirements.
 3. Connect AC power to the unit. If power redundancy is desired, connect power to both power plugs.
 4. Connect to a computer that has the Event Master control software installed, via an Ethernet cable. A switch is optional if additional devices will be connected.
 5. Power up the E2, the PC, all monitors and peripherals.
 6. Verify that no error messages appear on the E2 front panel.
 7. After the E2 boots up, run the Event Master control software and follow the sequence of instructions listed in this Quick Start Guide to complete the system setup and configuration.
- Should the system not fully boot correctly, press and hold the SEL and ESC buttons while applying power to the unit. Release these buttons when a menu appears asking to Factory Reset the unit. Perform the Factory Reset and the unit will boot normally.



- Expansion Cards**
- 2 High speed CXP connectors
- SDI Input & Output Cards**
- 4 SDI BNC connectors
 - SD/HD/3G formats (6G ready)
- DisplayPort/HDMI Combo Input Cards**
- 2 DP and 2 HDMI locking connectors
 - Displayport 1.1a specification
 - HDMI 1.4a specification
 - HDCP 1.4 & EDID 1.3
- DVI Input Cards**
- 2 DVI-I connectors (no analog signals)
 - Single / Dual Link formats
 - DVI 1.0 specification
 - HDCP 1.4 & EDID 1.3
- Quad Channel DisplayPort Output Cards**
- 4 full-size DP locking connectors
 - Up to 4 independent signals
 - DisplayPort 1.2 specification
 - HDCP will be supported in a future software release.
- HDMI Output cards (including MVR)**
- 4 HDMI connectors (top 2 connectors capable of high-speed HDMI signals up to 300 MHz)
 - HDMI 1.4a specification
 - HDCP 1.4 and EDID 1.3
- Notes:**
- Input and Output cards each support one 4K/UHD signal.
 - This sample system shows the optional DP 1.2 Output card. The system does not ship with this card; your configuration may be different.
 - Cards are **not** hot-swappable.



Refer to the User's Guide for a detailed description of each step

Multiviewer Menu (next page)

System Initialization

Return to Factory Default (Optional) - For a new event, back up your system if desired, then perform a complete factory reset. For a continuing (or multi-day) event, this step is not required.

Restoring the System (Optional) - Insert a USB drive with a previous backup file into the USB Port. On the Backup and Restore Menu, press {Restore System} and follow the prompts.

Backing up the System (Optional) - Insert a USB drive into the USB Port. On the Backup and Restore Menu, press {Backup System} to back up the system setup and all memory registers.

Factory Reset, System Backup and Restore - Operations can be performed from the Events Master Control software or from the front panel.

